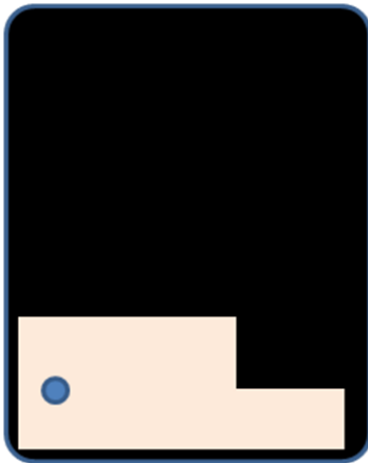
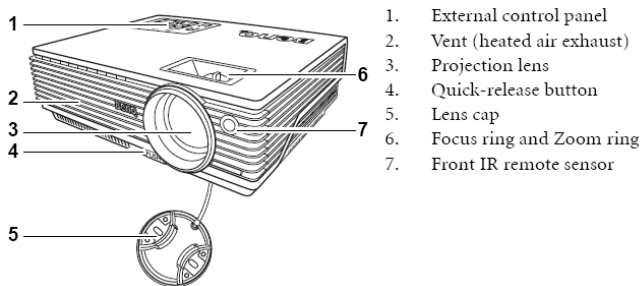


## Set Up The Projector & Remote Sender

- Lower the projector screen.
  - You'll need to use something to reach the cord - a mic stand will do the job.
  - The screen is a bit temperamental & you may need to try a few times to get it to stay in the lowered position. Don't bring it down to the lowest position as this will cause the screen to distort.
- Set up the projector stand.
  - Put it over the circle on the floor in front of the band area.
  - Make sure the feet are at least 60cm apart & that the wing nuts are tightened to keep it from moving.
- Run one of the blue extension leads from the power point on the stage to the projector. You may need a power board.
- Get the timber spacer out of the projector case & put it on the stand like this:



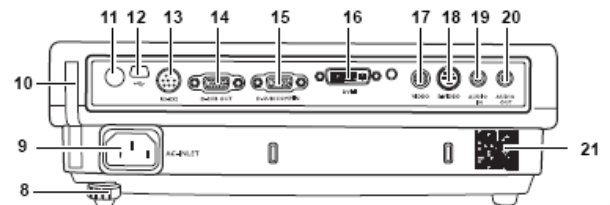
- Drop the stand built in to the projector - press button 4 from the diagram below to let it down.



- Put the projector on the stand with the foot hanging over the front. This will keep the projector in place & square on the stand.
- Put the Receiver for the remote on the spacer – it goes on the left hand side. The receiver unit and the spacer have Velcro to keep the receiver in place.
- Connect the receiver power pack
- At the computer end, put the Transmitter for the remote on the desk & connect the power pack.

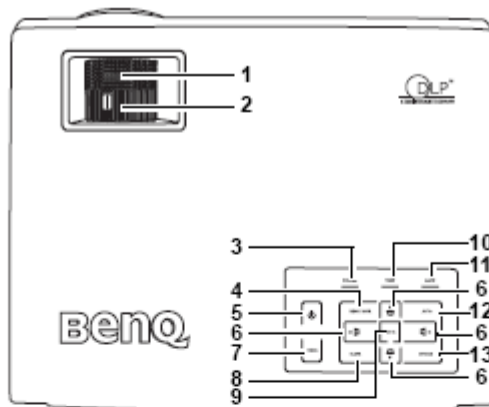
### If a Video or DVD is being shown

- Unpack the Video/Computer switch & connect its power pack
- Connect the DVD output (black video lead in the PA trolley) to the S-Video In port on the switch
- Connect the computer external video port to the VGA In port of the switch. Use the cable from the video switch (red plug at one end, blue at the other).
- Connect the VGA cable from the projector to the VGA Out port of the switch.
- Use the projector's VGA cable (blue plug at both ends) to the projector's RGB In port (15 on the diagram below). Connect the other end to the long VGA cable – it's marked P at the projector end and C at the computer end.



- |   |  |
|---|--|
| <ol style="list-style-type: none"> <li>8. Rear adjuster foot</li> <li>9. AC power cord inlet</li> <li>10. Filter case</li> <li>11. Rear IR remote sensor</li> <li>12. USB socket</li> <li>13. RS232 control port</li> <li>14. RGB signal output socket</li> </ol> | <ol style="list-style-type: none"> <li>15. RGB (PC)/Component video (YPbPr/ YCbCr) signal input socket</li> <li>16. DVI-I signal input socket</li> <li>17. Video input socket</li> <li>18. S-Video input socket</li> <li>19. Audio input socket</li> <li>20. Audio output socket</li> <li>21. Speaker grill</li> </ol> |
|---|--|

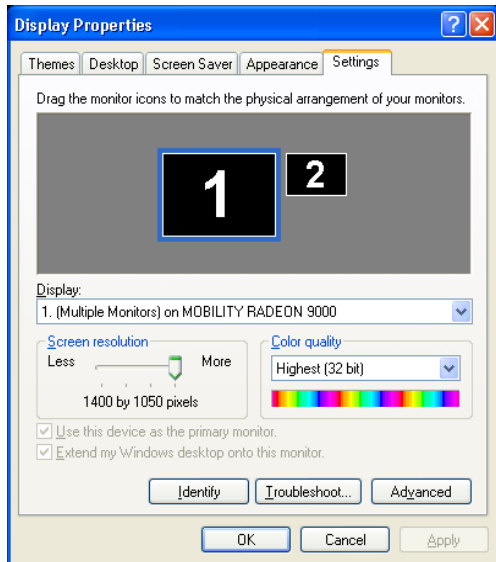
- Turn the projector on & set the zoom & focus (see diagram below to see the controls). Once the computer display is coming through, adjust the keystone.



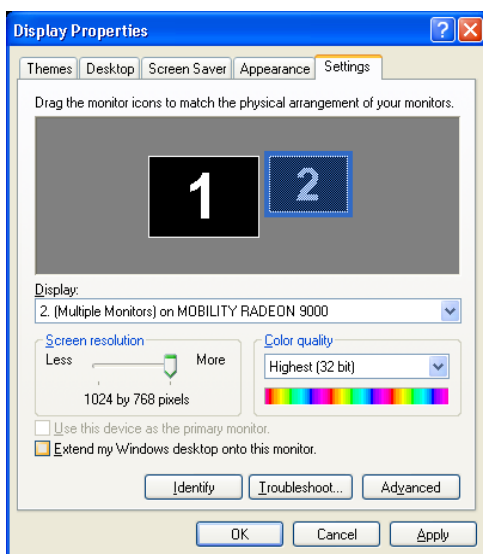
1. **Focus ring**  
Adjusts the focus of the projected image. See ["Fine-tuning the image size and clarity"](#) on page 35 for details.
2. **Zoom ring**  
Adjusts the size of the image. See ["Fine-tuning the image size and clarity"](#) on page 35 for details.
3. **Power indicator light**  
Lights up or flashes when the projector is under operation. See ["Indicators"](#) on page 60 for details.
4. **MENU/BACK**  
Turns on the On-Screen Display (OSD) menu.  
Goes back to previous OSD menu, exits and saves menu settings.  
See ["Using the menus"](#) on page 46 for details.
5. **Power**  
Toggles the projector between standby mode and on.  
When the projector is in standby mode, press once to turn the projector on.  
When the projector is on, press twice to turn the projector to standby.  
See ["Start up"](#) on page 31 and ["Shutting down the projector"](#) on page 43 for details.
6. **Keystone/Arrow buttons ( ◀ / ▲ Up, ▶ / ▼ Down, ◻ / ▶ Right)**  
Manually corrects distorted images resulting from an angled projection.  
When the On-Screen Display (OSD) menu is activated, the buttons are used as directional arrows to select the desired menu items and to make adjustments.  
See ["Correcting keystone"](#) on page 35 and ["Using the menus"](#) on page 46 for details.

# Set Up The Computer

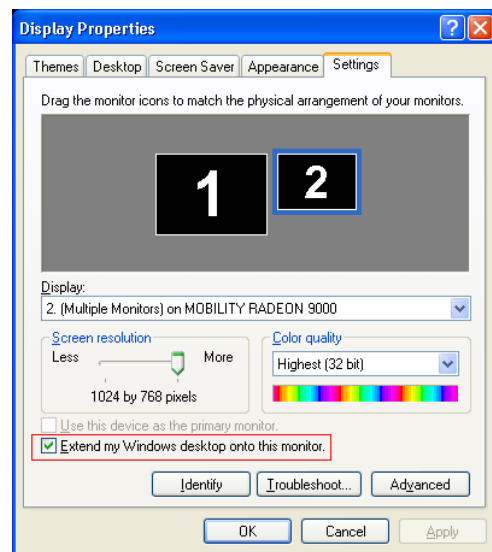
- Set the computer up to use 2 displays. Display 1 will be the notebook screen, display 2 will be the projector.
- Right-click on the desktop & select Properties, then click on the Settings tab. You will get a dialog box similar to the one shown below. The 2 displays are shown as 1 & 2.



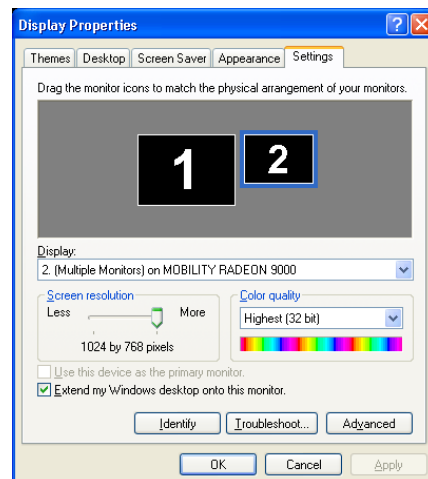
- Click on the box labelled 1 so that you can configure the notebook display.
- Use the Screen Resolution slider (marked in red in the following picture) to set the screen resolution to 1024 x 768 pixels.
- Click on 2 to set the configuration for the projector display.



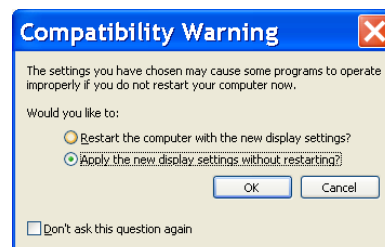
- Click the checkbox marked "Extend my Windows desktop onto this monitor" (marked in red below).



- Set the resolution of screen 2 to 1024 x 768 pixels & make sure that the Color quality setting is set to Highest (32 bit).

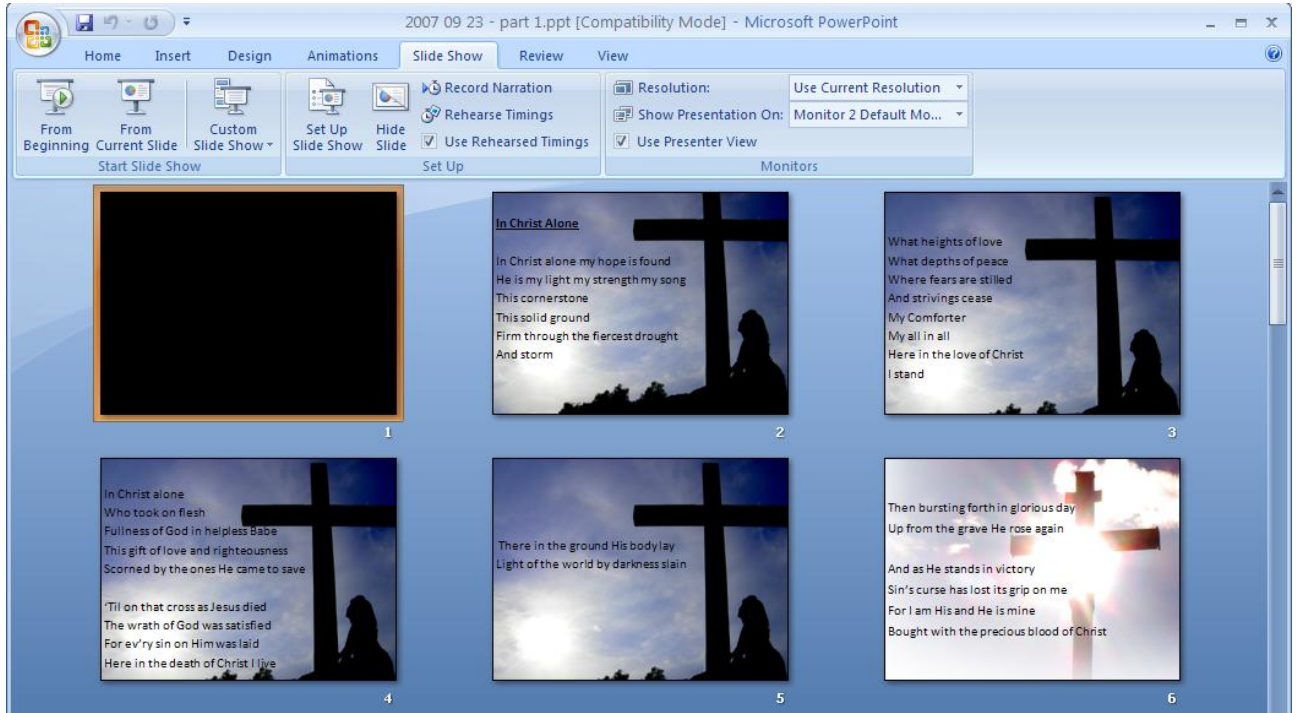


- Click OK to save the settings. You should get a warning like the one shown below. Make sure that the "Apply the new display settings without restarting" option is selected, then click on OK.

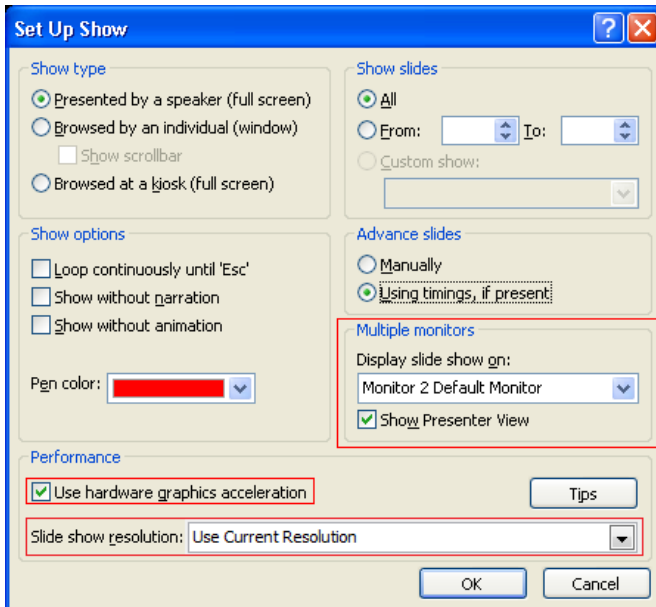


# Configure Powerpoint To Use The Projector

- You will now need to set Powerpoint up to use the Projector to display the Powerpoint file.
- Double-click on the Powerpoint file to open it.

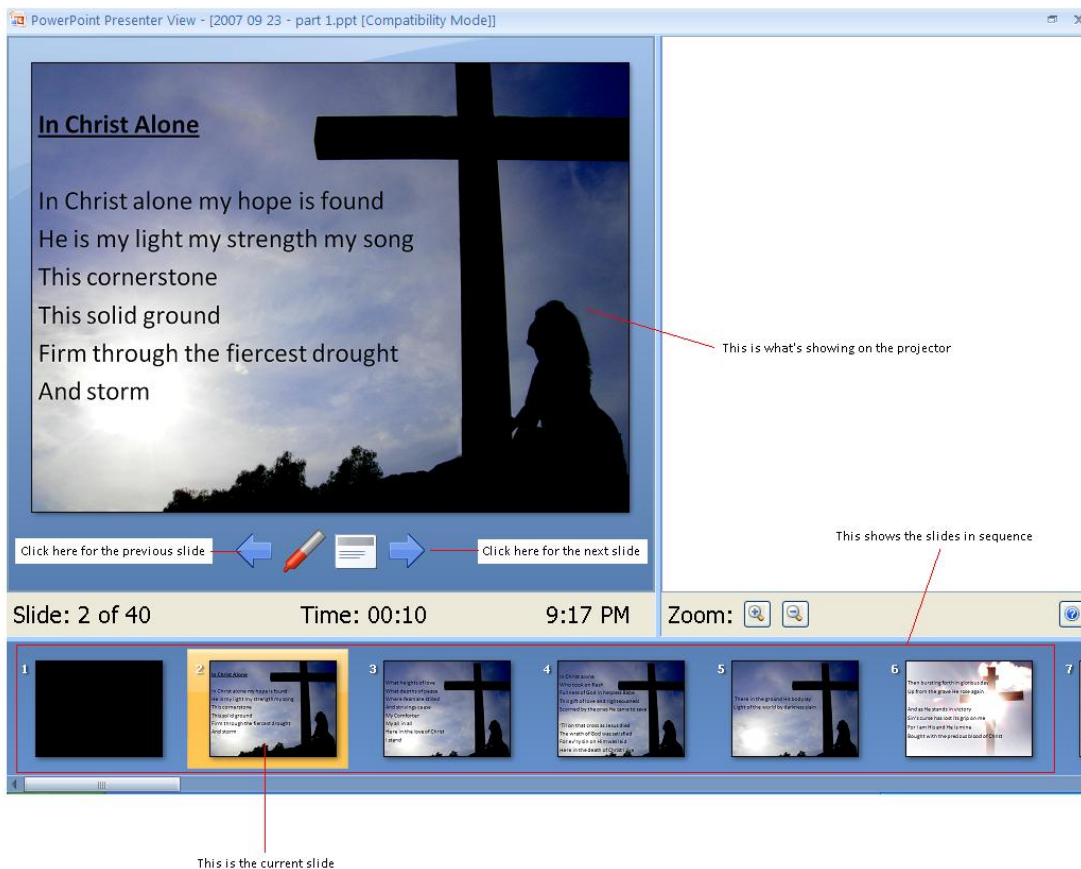
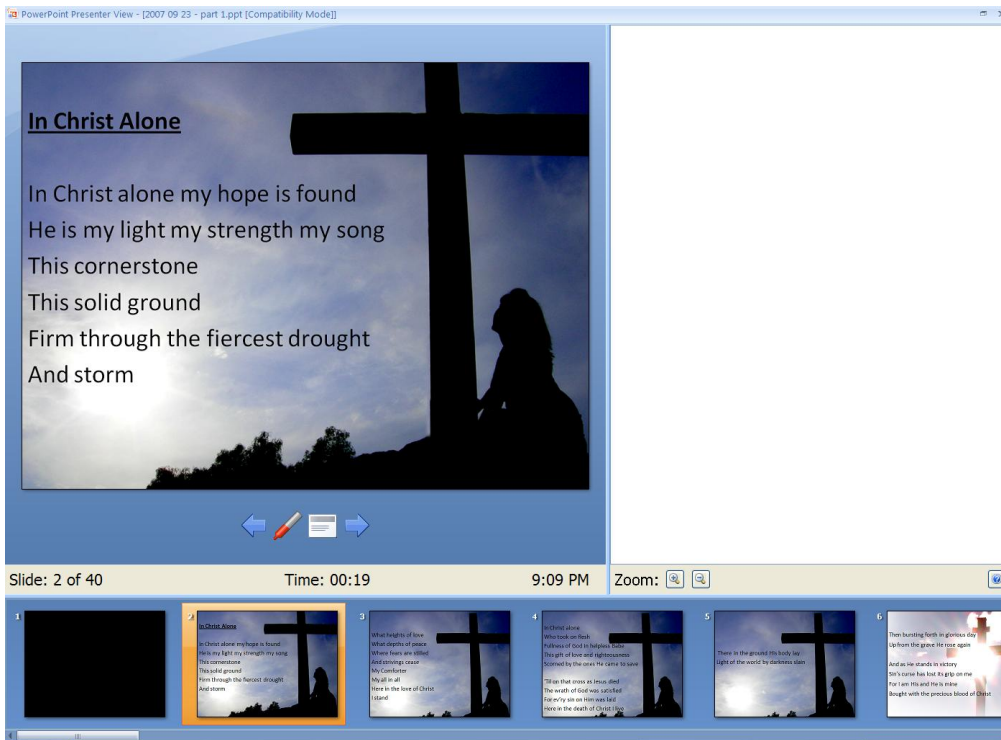


- Click on Set Up Slide Show. Configure the settings as shown below. The areas to check are marked in red.



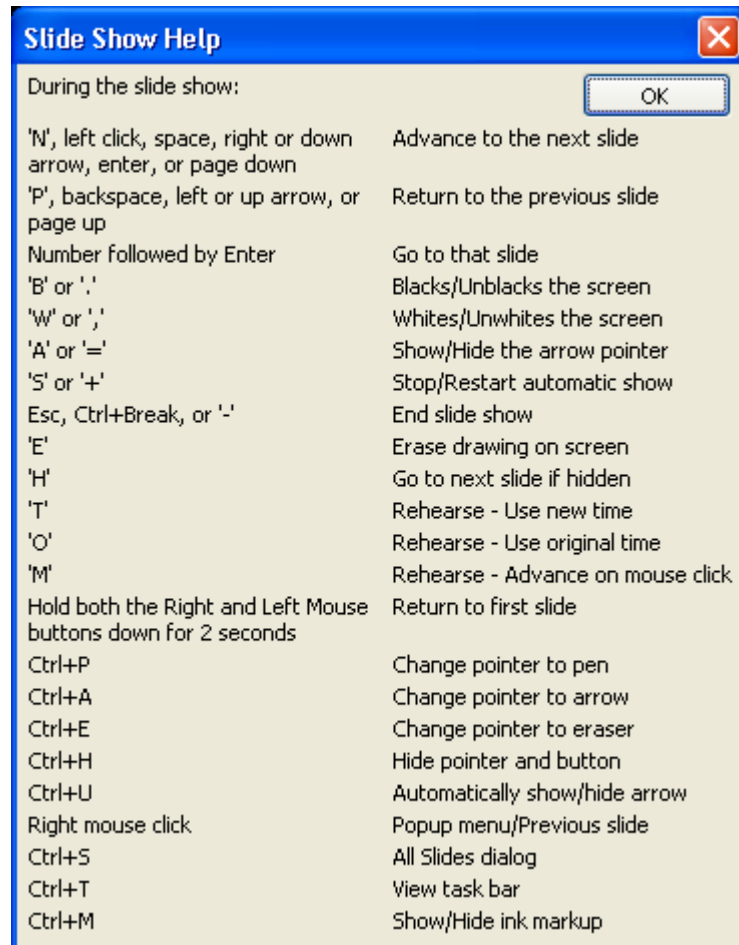
- Click OK to save the settings.

- Start the slide show – click on “From Beginning” to show from the first slide or on “From Current Slide” to show from the slide that is select (it will have a yellow border around it). The slides will display on the projector. The notebook display will show Powerpoint's Presenter view:



- Press B to set the projector screen to a black screen. Use this when working out what slide to go to, or during a sermon, etc.

- Press Esc to quit the slide show.
- Use the left & right arrows to move the show forward or backward.
- The bottom of the presenter view shows the slides. You can click on a slide in that list to display it on the projector.
- Click on the Help icon to see what keys you can use to operate the slide show.



# The Logitech Presenter

This ingenious thingy lets someone control the slideshow remotely. It's particularly good for people who are speaking and want to look after their slideshow themselves.

It looks like this:



The Receiver pulls out the top of the device & plugs into the computer's USB port.



Once you turn it on, it will be ready to use within a couple of seconds. If you have a PowerPoint file open, the F5 button will cause the show to start.